

Soft Sound® Acoustic Panel - In-stock

Features & Benefits:

- **Superior Acoustic Performance** - Soft Sound® Acoustic Panels are our premium sound absorption product that can be used anywhere reverberation (echo) is an issue. Our acoustic panels will improve speech intelligibility, improve production and improve any listening or recording environment.
- **Exceptional Quality** - Soft Sound® Acoustic Panels are a highly finished professional product. Soft Sound® Acoustic Panels are meticulously hand-made by experienced craftsmen that take pride in the product they build.
- **Fabric Covering Variety** - Soft Sound® Acoustic Panels are available with an endless variety of fabric options. Choose the fabric color and texture that best matches your existing décor. If desired, we will match your fabric of choice.



General Information:

The Soft Sound® family of acoustic panels is designed to improve sound quality and speech clarity within a space. They are, in essence, premium sound & noise absorbing wall coverings. Soft Sound® Acoustic Panels improve the acoustics within a room by minimizing reverberation (echo) within the low, middle and high frequencies. Our acoustic panels are a perfect marriage of form and function. Soft Sound® Acoustic Panels are a decorative, finished acoustic panel. The craftsmanship and materials are of the highest standards available on the market. Soft Sound® Acoustic Panels have a flammability rating of Class A and will pass most building code requirements for exposed materials.

Applications:

Auditoriums • Broadcast Studios • Classrooms and Educational Buildings • Commercial Recording Studios • Commercial Theaters
Computer and Equipment Rooms • Conference Rooms • Gymnasiums • Home Recording Studios • Home Theaters • Homes • Music Halls • Offices • Restaurants

Acoustic Data:

thickness	covering	density	125	250	500	1K	2K	4K	NRC*
1 inch	fabric	7 lbs	.14	.27	.66	.92	1.10	1.25	0.75
2 inch	fabric	6 lbs	.25	.89	1.17	1.16	1.10	1.08	1.10

* NRC = noise reduction coefficient

continued on back of page

ADDRESS

Soundproofcow
440 Ramsey Avenue
Chambersburg, PA 17201

PHONE

P: 1-866-9499-COW
F: (717) 261-1790

WEB

www.soundproofcow.com



Product Availability:

Dimensions:

- 1 in. thick x 24 in. x 24 in. - case of 8 or 20
- 1 in. thick x 24 in. x 48 in. - case of 4 or 10
- 2 in. thick x 24 in. x 48 in. - case of 2 or 4

Acoustic Core:

- 6-7 lbs Fiberglass

Edge Type:

- Fabric wrapped, resin hardened

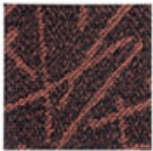
Edge Detail:

- Square (Black, Crystal Blue & Pearl fabric coverings)

Edge Detail:

- Bevel (Azalea, Beeswax, Birch, Coffee, Green Earth, Linseed Glaze, Quarry Blue, Red Delicious, Sapphire, Willow & Zinc fabric coverings)

Fabric Options:



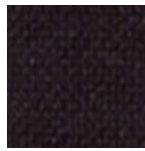
Azalea



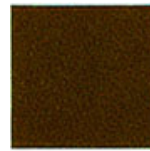
Beeswax



Birch



Black



Coffee Bean



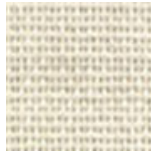
Crystal Blue



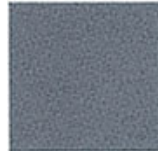
Green Earth



Linseed Glaze



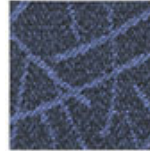
Pearl



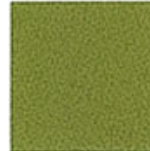
Quarry Blue



Red Delicious



Sapphire



Willow



Zinc

*Please note that printed colors may vary from actual color.

Mounting Option:

- **Adhesive** - Adhesive mounting is ideally suited for permanent applications requiring speed and ease of installation. This type of installation requires little to no layout time depending on various field conditions. Use this method if there is a potential for impact or other stresses. The adhesive method provides the strongest bond between panel and wall.

ADDRESS

Soundproofcow
440 Ramsey Avenue
Chambersburg, PA 17201

PHONE

P: 1-866-9499-COW
F: (717) 261-1790

WEB

www.soundproofcow.com

