

FR701[®] 2100

Acoustic



Eggshell
144



Wheat
130



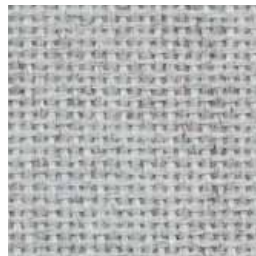
Quartz
380



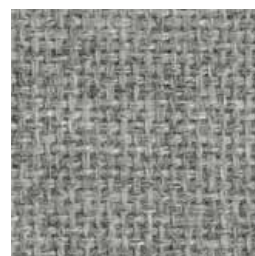
Bone
748



Desert Sand
758



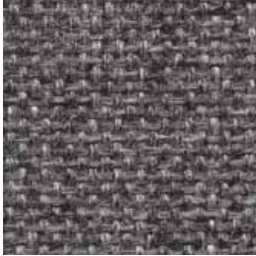
Silver Papier
538



Grey Mix
238



Wedgewood
150



Medium Grey
298



Black
408

FR701® 2100

Acoustic

Specifications

Content

100% post-consumer recycled polyester

Weight

16.0 ± 0.5 oz./lin. yd.

Width

66" min. useable

Repeat

none

Cleaning Code

W-S

Performance



Colorfastness to Light (AATCC 16 Option 3)
Grade 4 min. at 40 hours



Colorfastness to Crocking (AATCC 8)
Grade 4 min. dry & Grade 3 min. wet



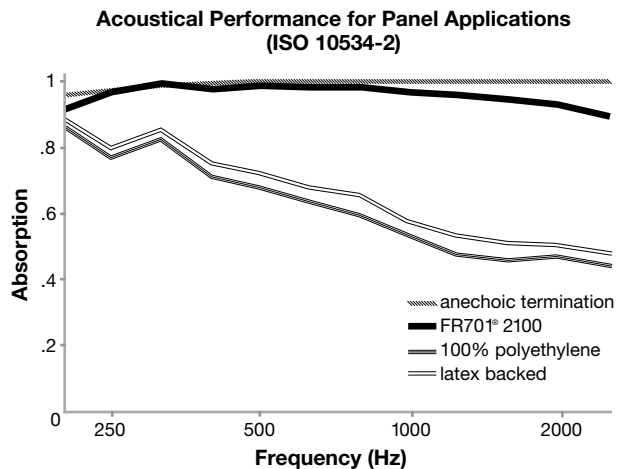
Breaking Strength (ASTM D5034)
150 lbf min. warp and fill



*** Flammability (ASTM E84)**
Class I or A

Acoustical Performance

The plot below summarizes impedance tube measurements of absorption of an anechoic termination and various fabrics in front of the anechoic termination.



NRC of anechoic termination

1.00

NRC of fabric in front of anechoic termination

.95

Miscellaneous

Colors may vary slightly between dye lots.

This is a non-directional fabric.

Application testing of this product is recommended.



Visit guilfordofmaine.com for complete specs and samples.



Terratex is a registered trademark of True Textiles, Inc. and designates fabrics that are made from 100% recycled or compostable material using increasingly sustainable manufacturing practices to produce a high quality product that is recyclable at the end of its useful life. (terratex.com)



CO₂ emissions from 100% of the electricity used by the manufacturer to produce this product have been measured and offset in accordance with The CarbonNeutral Protocol.



This pattern is included in the underwriters laboratory panel fabric recognition program. Additional testing of this U.L. recognized component fabric is not required on approved panels from participating manufacturers.

*ACT® registered certification marks.



American Micro Industries, Inc.
Attn: SoundproofCow.com
440 Ramsey Avenue
Chambersburg, PA 17201

sales@soundproofcow.com

Toll Free: 1-866-949-9COW
(1-866-949-9269)
Local: 717-262-7206
Fax: 717-261-1790