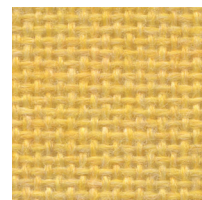
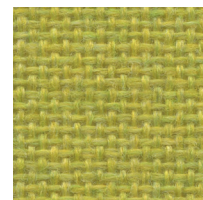


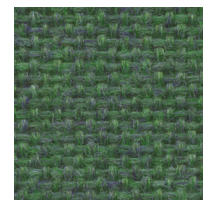
**FR701<sup>®</sup>**  
**2100**



**Yellow**  
744



**Chartreuse**  
734



**Fir**  
743



**Leaf**  
755



**Dune**  
749



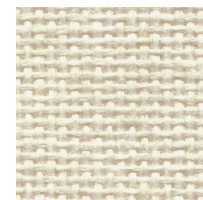
**Wheat**  
130



**Bone**  
748



**Buff**  
460



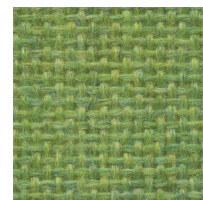
**Eggshell**  
144



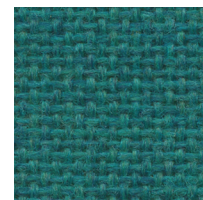
**White**  
224



**Sunshine**  
797



**Lime**  
721



**Teal**  
742



**Green Neutral**  
402



**Stream**  
757



**Eucalyptus**  
468



**Desert Sand**  
758



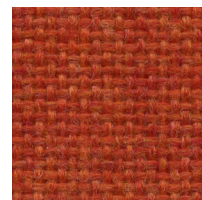
**Apricot Neutral**  
404



**Quartz**  
380



**Pearl**  
481



**Orange**  
746



**Sky**  
740



**Sapphire**  
745



**Blue Spruce**  
467



**Verte Papier**  
561



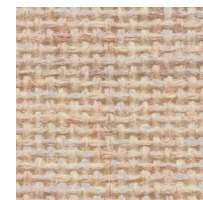
**Blue Papier**  
539



**Coin**  
794



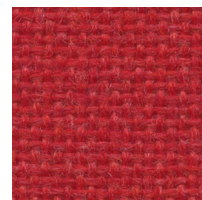
**Cherry Neutral**  
400



**Vanilla Neutral**  
403



**Opal**  
394



**Cardinal**  
738



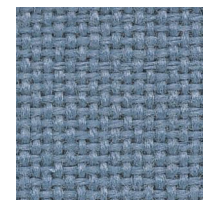
**Cobalt**  
420



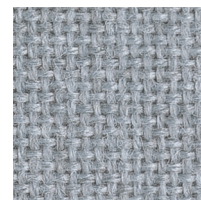
**Baltic**  
153



**Wedgewood**  
150



**Bayberry**  
486



**Crystal Blue**  
175



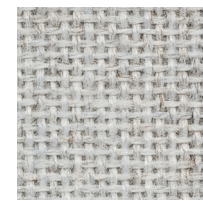
**Blue Neutral**  
401



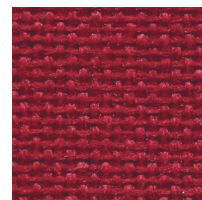
**Cinnabar**  
422



**Straw**  
747



**Silver Papier**  
538



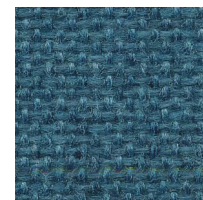
**Red**  
799



**Iris**  
798



**Blue Plum**  
553



**Ultramarine**  
470



**Aquamarine**  
381



**Steel Grey**  
471



**Grey Mix**  
238



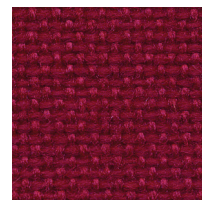
**Pumice**  
423



**Light Moss**  
754



**Cement Mix**  
750



**Claret Accent**  
418



**Deep Burgundy**  
556



**Black**  
408



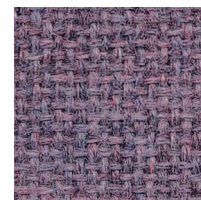
**Chocolate**  
793



**Medium Grey**  
298



**Flannel**  
795



**Amethyst**  
424



**Moleskin**  
796



**Earth**  
792



**Silver Neutral**  
406

# FR701® 2100

## Specifications

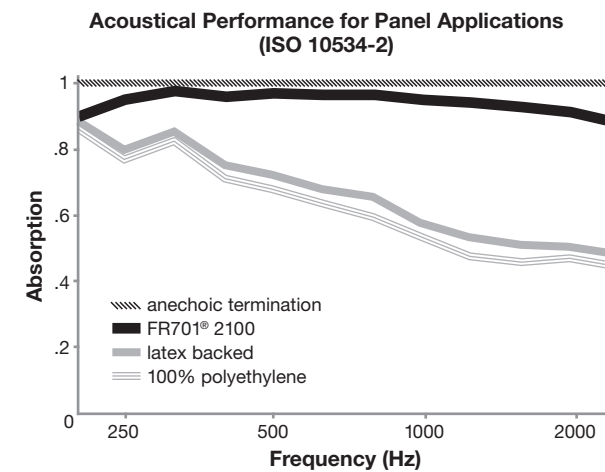
Content	<b>100% post-consumer recycled polyester</b>
Weight	<b>16.0 ± 0.5 oz./lin. yd.</b>
Width	<b>66" min. useable</b>
Repeat	<b>none</b>

## Cleaning Code

Standard Care Label W-S. Clean with water based cleaning agents, foam or pure, water free solvents. Vacuuming or light brushing is recommended to prevent dust and soil buildup.


## Acoustical Performance

The plot below summarizes impedance tube measurements of absorption of an anechoic termination and various fabrics in front of the anechoic termination.




NRC of anechoic termination	<b>1.00</b>
NRC of fabric in front of anechoic termination	<b>0.95</b>


## Performance

-  Colorfastness to Light (AATCC 16.3 Option 3)  
**Grade 4 min. at 40 hours**


---

-  Colorfastness to Crocking (AATCC 8)  
**Grade 4 min. dry & Grade 3 min. wet**



---

-  Breaking Strength (ASTM D5034)  
**150 lbf min. warp and fill**

---

-  Flammability (ASTM E84)  
**Class I or A**

## Sustainability

-  **100% recycled and recyclable**  
Terratex is a registered trademark of Duvaltex
- 

## Miscellaneous

Proudly woven in North America supporting our local communities.  
Application testing of this product is recommended. Colors may vary between dye lots. This is a non-directional fabric.

Visit [guilfordofmaine.com](http://guilfordofmaine.com) for samples.

 This pattern is included in the underwriters laboratory panel fabric recognition program. Additional testing of this U.L. recognized component fabric is not required on approved panels from participating manufacturers.

\*Certification Marks owned by the Association for Contract Textiles, Inc.