

IMPACT BARRIER

Description

Impact Barrier is an industry leading sound control carpet underlayment that combines the sound blocking characteristics of our Quiet Barrier material with the sound and impact absorption characteristics of our specially formulated cotton pad. The instructions that follow are to be used for both the Impact Barrier HD and MD material. Please read instructions thoroughly before starting installation and if you have a question please do not hesitate to call **1-866-949-9269**.

General Installation Tips

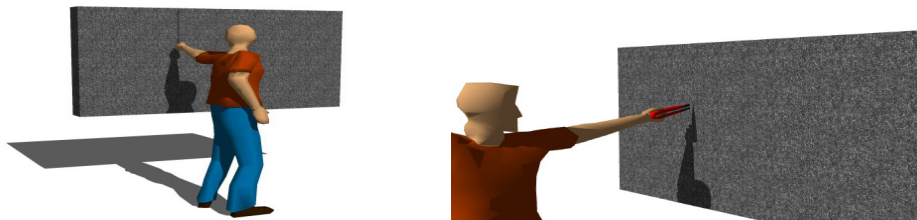
Impact Barrier should only be used as an underlayment under carpeted floors. This is not a suitable underlayment for tile, hardwood, or laminate flooring. Carpet and tack strip should be installed with this material per their specific manufacturer's instructions. Before installing, subfloor surface should be clean and free of any materials sticking out causing abnormalities in the finished carpet. It helps to plan layout so there are no seams in or in front of high traffic door or walkways. The cotton padding has a tendency to dull knives quickly, so you may need to change blades frequently to keep the cut edges clean.

Tools Required

utility knife, tape measure, straight edge, duct tape, marker or chalk line

Cutting:

1. Mark the Impact Barrier to the appropriate size using the tape measure and chalk line or pencil.



2. Cut along the line making sure the utility knife cuts both the cotton and barrier layer completely.

Installation Instructions

- 1) Lay the material out in a brick pattern. Cut around all walls and trim boards and remember to allow a $\frac{1}{4}$ " gap around the perimeter to be sealed later with acoustical sealant. Mark where the edges of the material will be using a pencil - this is going to help on the next step.

ADDRESS

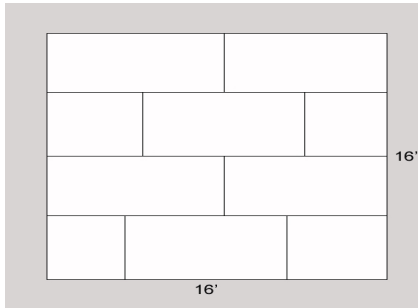
Soundproofcow
440 Ramsey Avenue
Chambersburg, PA 17201

PHONE

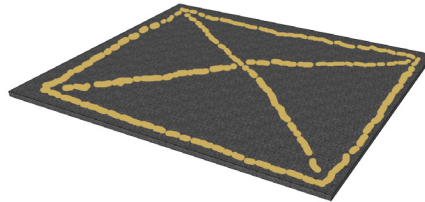
P: 1-866-949-9COW
F: (717)261-1790

WEB

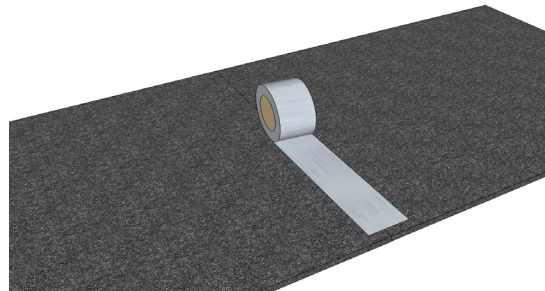
www.soundproofcow.com



- 2) After the material has been laid out, glue down each piece individually using PL Polyurethane Construction Adhesive.
 - a. Create a perimeter around the outside of the material staying 1 ½" away from the edge. After the perimeter bead has been appropriately applied, create an X pattern across the center of the material.



- b. The material is then ready to be rolled out on to the floor in the appropriate position. Smooth out any imperfections and ensure the material is flat with no bumps from the adhesive. Repeat process for all remaining pieces.
- 3) After the glue has dried, seal the seams using duct tape to ensure the material does not separate over time. Seal the ¼" gap around the perimeter using OSI 175 Acoustical Sound Sealant.



ADDRESS

Soundproofcow
440 Ramsey Avenue
Chambersburg, PA 17201

PHONE

P: 1-866-949-9COW
F: (717)261-1790

WEB

www.soundproofcow.com