

Birdseye 2748

Birdseye 2748



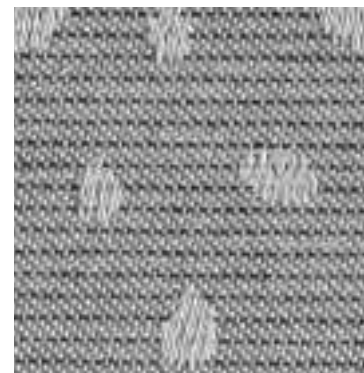
Zebra
2330



Outlook
2321



Rock
2319



Vista
2320



Impression
2322



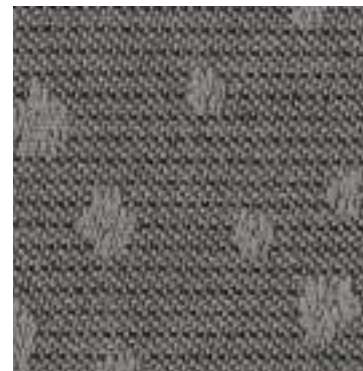
Glide
2325



Pewter
2329



Panorama
2327



Flight
2323

Specifications

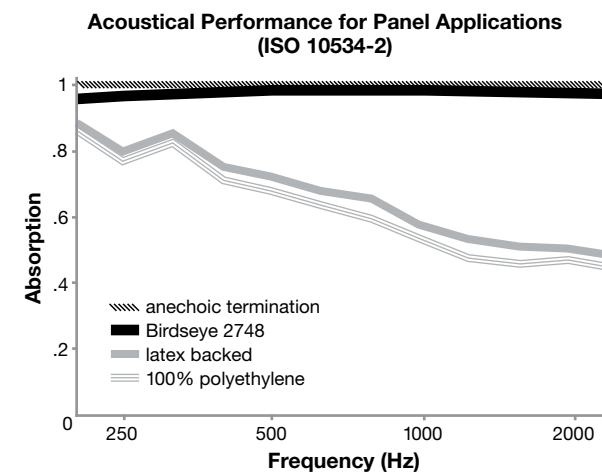
Content	88% pre-consumer recycled polyester 12% polyester
Weight	12.5 ± 1.0 oz./lin. yd.
Width	66" min. useable
Repeat	20" vertical 17" horizontal

Cleaning Code

Standard Care Label W-S. Clean with water based cleaning agents, foam or pure, water free solvents. Vacuuming or light brushing is recommended to prevent dust and soil buildup.

Acoustical Performance

The plot below summarizes impedance tube measurements of absorption of an anechoic termination and various fabrics in front of the anechoic termination.



NRC of anechoic termination	1.00
NRC of fabric in front of anechoic termination	.95

Performance

- Colorfastness to Light (AATCC 16.3 Option 3)
Grade 4 min. at 40 hours
- Colorfastness to Crocking (AATCC 8)
Grade 4 min. dry & Grade 3 min. wet
- Breaking Strength (ASTM D5034)
250 lbf min. warp and 150 lbf. min. fill
- Flammability (ASTM E84)
Class I or A

Miscellaneous

Proudly woven in North America supporting our local communities.

Application testing of this product is recommended. Colors may vary between dye lots. This is a directional fabric.

Visit guilfordofmaine.com for samples.

This pattern is included in the underwriters laboratory panel fabric recognition program. Additional testing of this U.L. recognized component fabric is not required on approved panels from participating manufacturers.

*Certification Marks owned by the Association for Contract Textiles, Inc.