

Block Party 2538

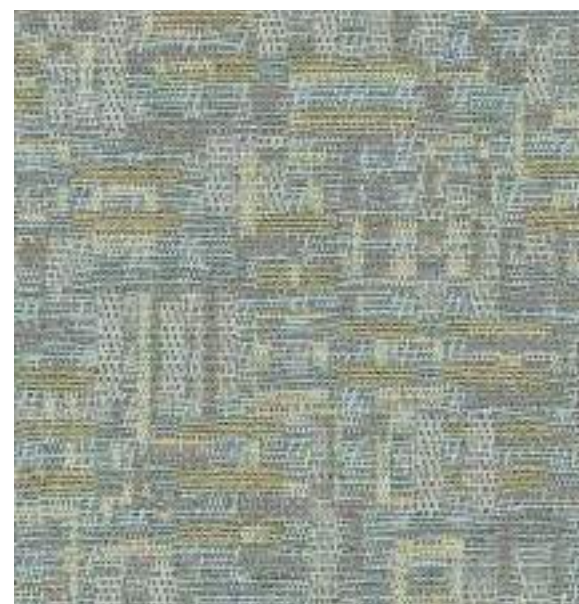
Block Party 2538



Pebble
011



Canyon
021



Isle
010



Oasis
013

Specifications

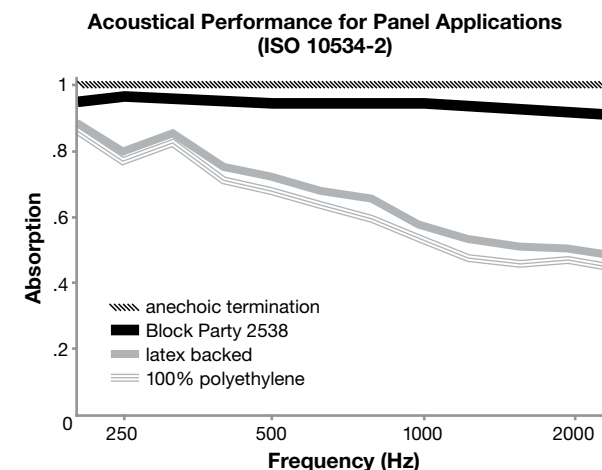
Content	26% post-consumer recycled polyester 74% pre-consumer recycled polyester
Weight	12.6 ± 1.0 oz./lin. yd.
Width	66" min. useable
Repeat	12.9" vertical 13.9" horizontal

Cleaning Code

Standard Care Label W-S. Clean with water based cleaning agents, foam or pure, water free solvents. Vacuuming or light brushing is recommended to prevent dust and soil buildup.

Acoustical Performance

The plot below summarizes impedance tube measurements of absorption of an anechoic termination and various fabrics in front of the anechoic termination.



NRC of anechoic termination	1.00
NRC of fabric in front of anechoic termination	.95

Performance

- Colorfastness to Light (AATCC 16.3 Option 3)
Grade 4 min. at 40 hours
- Colorfastness to Crocking (AATCC 8)
Grade 4 min. dry & Grade 3 min. wet
- Breaking Strength (ASTM D5034)
250 lbf min. warp and 150 lbf min. fill
- Flammability (ASTM E84)
Class I or A

Sustainability

- 100% recycled and recyclable**
Terratek is a registered trademark of Duvaltex
- facts[™] Silver**

Miscellaneous

Proudly woven in North America supporting our local communities.
Application testing of this product is recommended.
Colors may vary between dye lots. This is a directional fabric.

Visit guilfordofmaine.com for samples.

This pattern is included in the underwriters laboratory panel fabric recognition program. Additional testing of this U.L. recognized component fabric is not required on approved panels from participating manufacturers.

*Certification Marks owned by the Association for Contract Textiles, Inc.