

Cape Cod 3073

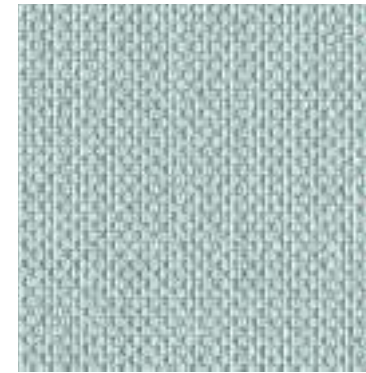
PANEL | ACOUSTIC

Cape Cod 3073

PANEL | ACOUSTIC



Linen
7031



Cloud
7030



Key Lime
7050



Shale
7042



Seagull
7072



Apricot
7010



Buff
7011



Dune
7040



Surf
7062

Specifications

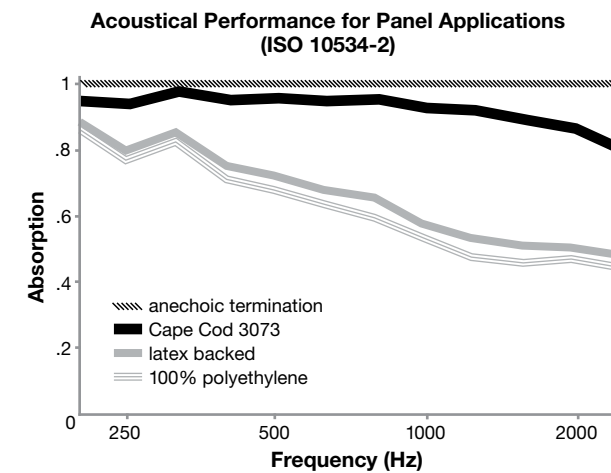
Content	24% post-consumer recycled polyester 76% pre-consumer recycled polyester
Weight	12.4 ± 1.0 oz./lin. yd.
Width	66" min. useable
Repeat	none
Treatment	polyester binder

Cleaning Code

Standard Care Label W-S. Clean with water based cleaning agents, foam or pure, water free solvents. Vacuuming or light brushing is recommended to prevent dust and soil buildup.

Acoustical Performance

The plot below summarizes impedance tube measurements of absorption of an anechoic termination and various fabrics in front of the anechoic termination.



NRC of anechoic termination	1.00
NRC of fabric in front of anechoic termination	.95

Performance

- Colorfastness to Light (AATCC 16.3 Option 3)
Grade 4 min. at 40 hours
- Colorfastness to Crocking (AATCC 8)
Grade 4 min. dry & Grade 3 min. wet
- Breaking Strength (ASTM D5034)
150 lbf min. warp and fill
- Flammability (ASTM E84)
Class I or A

Sustainability

100% recycled and recyclable
Terratec is a registered trademark of Duvaltex



Miscellaneous

Proudly woven in North America supporting our local communities.

Application testing of this product is recommended.
Colors may vary between dye lots. This is a directional fabric.

Visit guilfordofmaine.com for samples.

This pattern is included in the underwriters laboratory panel fabric recognition program. Additional testing of this U.L. recognized component fabric is not required on approved panels from participating manufacturers.

*Certification Marks owned by the Association for Contract Textiles, Inc.