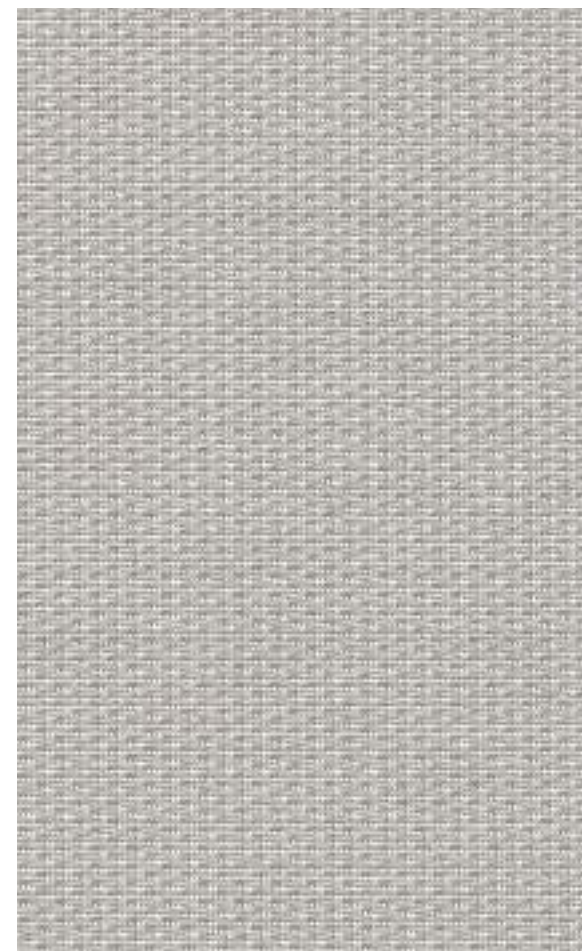


Essence 4873

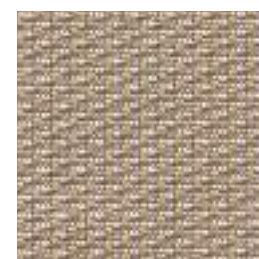
PANEL

PANEL

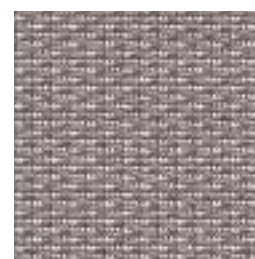
Essence 4873



Ash
2634



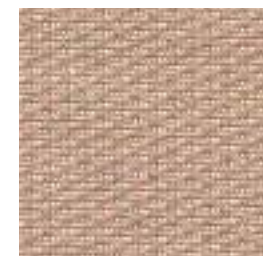
Tobacco
2635



Charcoal Melange
2637



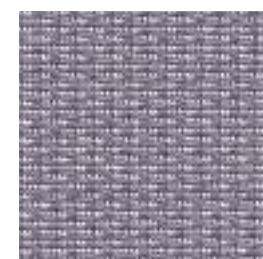
Cream
2631



Tawny
2630



Clementine
2638



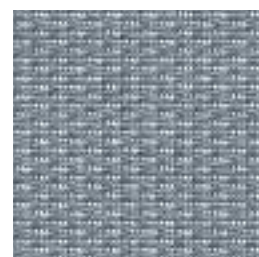
Boysenberry
2639



Spanish Olive
2632



Heather
2633



Waters
2636

Specifications

Content	100% polyester
Weight	11.8 ± 1.0 oz./lin. yd.
Width	66" min. useable
Repeat	.27" vertical .18" horizontal

Cleaning Code

Standard Care Label W-S. Clean with water based cleaning agents, foam or pure, water free solvents. Vacuuming or light brushing is recommended to prevent dust and soil buildup.

Miscellaneous

Proudly woven in North America supporting our local communities.

Application testing of this product is recommended. Colors may vary between dye lots. This is a directional fabric.

Visit guilfordofmaine.com for samples.





This pattern is included in the underwriters laboratory panel fabric recognition program. Additional testing of this U.L. recognized component fabric is not required on approved panels from participating manufacturers.


*Certification Marks owned by the Association for Contract Textiles, Inc.

Performance

 Colorfastness to Light (AATCC 16.3 Option 3)
Grade 4 min. at 40 hours

 Colorfastness to Crocking (AATCC 8)
Grade 4 min. dry & Grade 3 min. wet

 Breaking Strength (ASTM D5034)
160 lbf warp and 105 lbf fill

 Flammability (ASTM E84)
Class I or A

Sustainability

