

FR703™ 3123

FR703™ 3123



Parchment
060



Sand
070



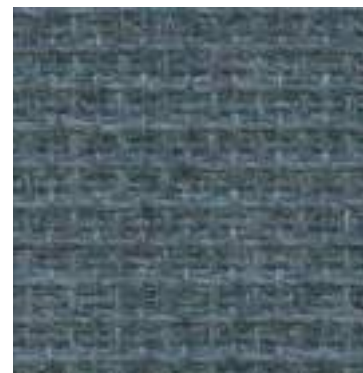
Cloud
050



Flax
080



Pebble
040



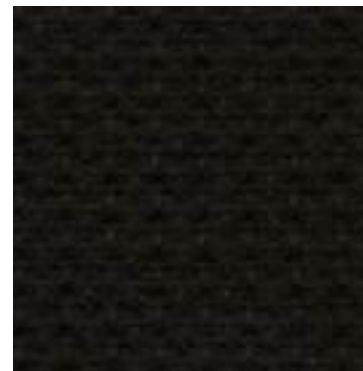
Arctic
010



Oyster
090



Shadow
030



Raven
020

Specifications

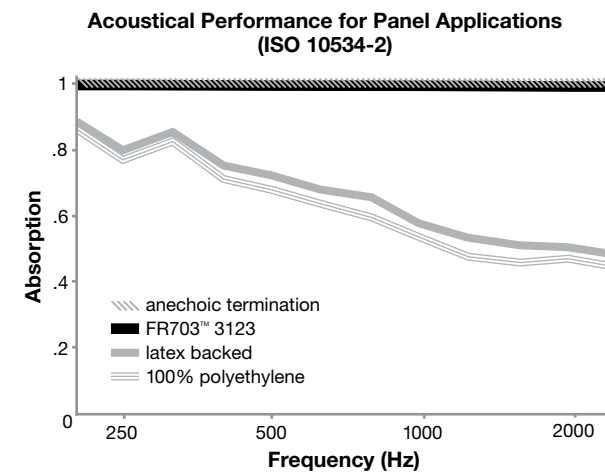
Content	100% post-consumer recycled polyester
Weight	20.1 ± 1.0 oz./lin. yd.
Width	66" min. useable
Repeat	none
Backing	none
Treatment	none

Cleaning Code

Standard Care Label W-S. Clean with water based cleaning agents, foam or pure, water free solvents. Vacuuming or light brushing is recommended to prevent dust and soil buildup.

Acoustical Performance

The plot below summarizes impedance tube measurements of absorption of an anechoic termination and various fabrics in front of the anechoic termination.



NRC of anechoic termination	1.00
NRC of fabric in front of anechoic termination	1.00

Performance

- Colorfastness to Light (AATCC 16.3 Option 3)
Grade 4 min. at 40 hours
- Colorfastness to Crocking (AATCC 8)
Grade 4 min. dry & Grade 3 min. wet
- Breaking Strength (ASTM D5034)
160 lbf min. warp and 200 lbf. min. fill
- Tear Strength (ASTM D2261)
55 lbf min. warp and 60 lbf min. fill
- Flammability (ASTM E84)
Class I or A

Sustainability

100% recycled and recyclable
Terratec is a registered trademark of Duvaltex



Miscellaneous

Proudly woven in North America supporting our local communities.

Application testing of this product is recommended.
Colors may vary between dye lots. This is a directional fabric.

Visit guilfordofmaine.com for samples.

This pattern is included in the underwriters laboratory panel fabric recognition program. Additional testing of this U.L. recognized component fabric is not required on approved panels from participating manufacturers.

*Certification Marks owned by the Association for Contract Textiles, Inc.