

Framework 2762

PANEL | ACOUSTIC

Framework 2762

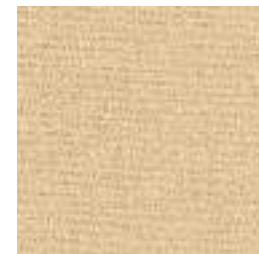
PANEL | ACOUSTIC



Grotto
2829



Dove Gray
2689



Chamois
2552



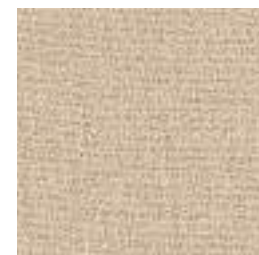
Sandy Pebble
2554



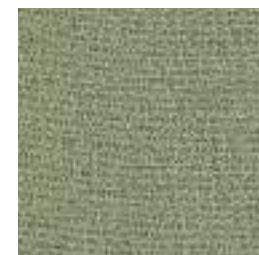
Capri
2831



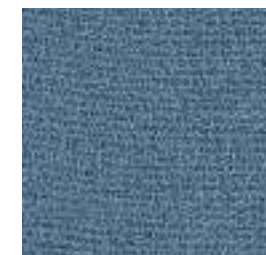
Gray Blue
2553



Beige
2687



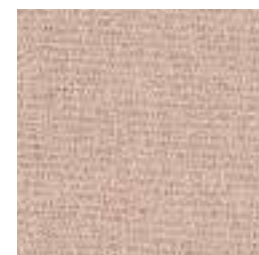
Eucalyptus
2555



Blue Smooth
2519



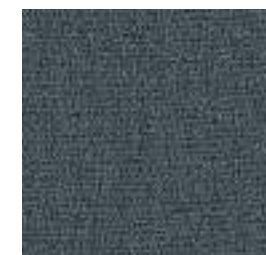
Stone
2688



Fresco
2830



Cappuccino
2832



Elephant
2690



Espresso
2833

Specifications

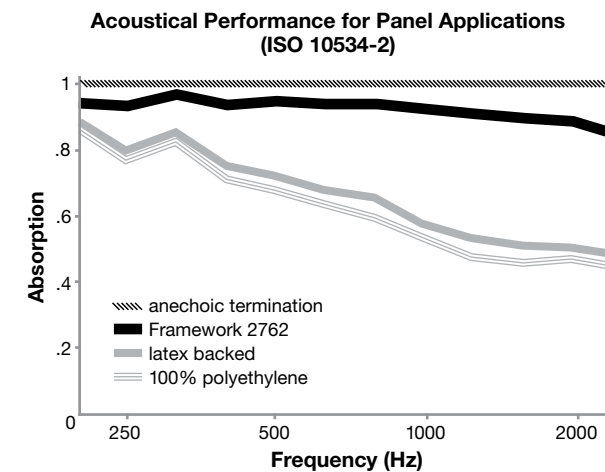
Content	100% polyester
Weight	9.5 ± 0.5 oz./lin. yd.
Width	66" min. useable
Repeat	none

Cleaning Code

Standard Care Label W-S. Clean with water based cleaning agents, foam or pure, water free solvents. Vacuuming or light brushing is recommended to prevent dust and soil buildup.

Acoustical Performance

The plot below summarizes impedance tube measurements of absorption of an anechoic termination and various fabrics in front of the anechoic termination.



NRC of anechoic termination	1.00
NRC of fabric in front of anechoic termination	.90

Performance

- Colorfastness to Light (AATCC 16.3 Option 3)
Grade 4 min. at 40 hours
- Colorfastness to Crocking (AATCC 8)
Grade 4 min. dry & Grade 3 min. wet
- Breaking Strength (ASTM D5034)
150 lbf min. warp and 125 lbf min. fill
- Flammability (ASTM E84)
Class I or A

Miscellaneous

Proudly woven in North America supporting our local communities.

Application testing of this product is recommended. Colors may vary between dye lots. This is a directional fabric.

Visit guilfordofmaine.com for samples.

This pattern is included in the underwriters laboratory panel fabric recognition program. Additional testing of this U.L. recognized component fabric is not required on approved panels from participating manufacturers.

*Certification Marks owned by the Association for Contract Textiles, Inc.