

Mingle 2527

Mingle 2527



Biscuit
090



Crystal
060



Straw
030



Winter
070



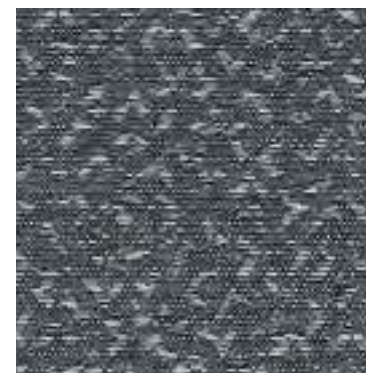
Putty
080



Green Tea
040



Khaki
020



Carbon
010

Specifications

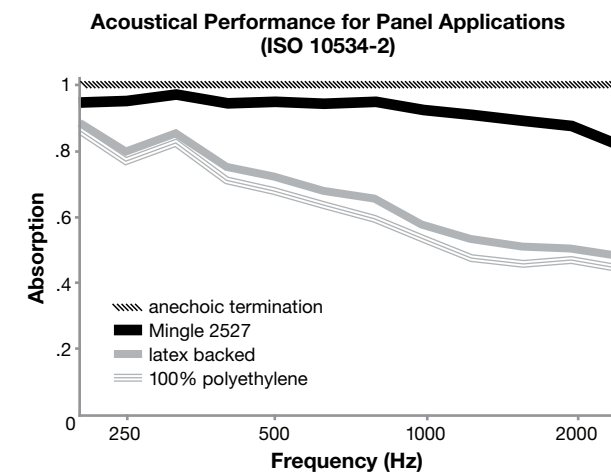
Content	23% post-consumer recycled polyester 77% pre-consumer recycled polyester
Weight	10.9 ± 1.0 oz./lin. yd.
Width	66" min. useable
Repeat	16.7" vertical 16.2" horizontal

Cleaning Code

Standard Care Label W-S. Clean with water based cleaning agents, foam or pure, water free solvents. Vacuuming or light brushing is recommended to prevent dust and soil buildup.

Acoustical Performance

The plot below summarizes impedance tube measurements of absorption of an anechoic termination and various fabrics in front of the anechoic termination.



NRC of anechoic termination	1.00
NRC of fabric in front of anechoic termination	.90

Performance

- Colorfastness to Light (AATCC 16.3 Option 3)
Grade 4 min. at 40 hours
- Colorfastness to Crocking (AATCC 8)
Grade 4 min. dry & Grade 3 min. wet
- Breaking Strength (ASTM D5034)
250 lbf min. warp and 100 lbf min. fill
- Flammability (ASTM E84)
Class I or A

Sustainability

- 100% recycled and recyclable**
Terratec is a registered trademark of Duvaltex
- facts[™] Silver**

Miscellaneous

Proudly woven in North America supporting our local communities.
Application testing of this product is recommended.
Colors may vary between dye lots. This is a directional fabric.

Visit guilfordofmaine.com for samples.

This pattern is included in the underwriters laboratory panel fabric recognition program. Additional testing of this U.L. recognized component fabric is not required on approved panels from participating manufacturers.
*Certification Marks owned by the Association for Contract Textiles, Inc.