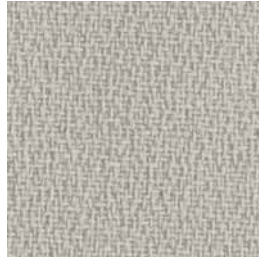


Sensa 9218

Acoustic



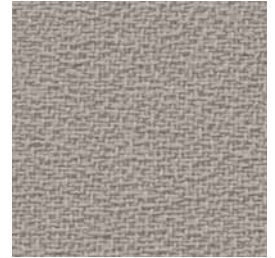
White
0



Nickel
543



Basswood
1183



Autumn Smoke
542



Warm Shadow
540



Sea Palm
566



Blue Ridge
553



Sphinx
1188



Silver Pine
552



Black
718

Sensa 9218

Acoustic

Specifications

Content

49% pre-consumer recycled polyester
51% polyester

Weight

13.0 ± 1.0 oz./lin. yd.

Width

66" min. useable

Repeat

none

Cleaning Code

W-S

Performance



Colorfastness to Light (AATCC 16 Option 3)

Grade 4 min. at 40 hours



Colorfastness to Crocking (AATCC 8)

Grade 4 min. dry & Grade 3 min. wet



Breaking Strength (ASTM D5034)

200 lbf min. warp and 150 lbf min. fill

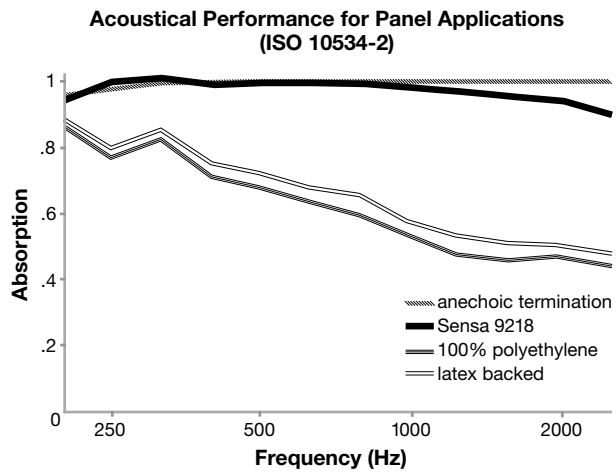


Flammability (ASTM E84)

Class I or A

Acoustical Performance

The plot below summarizes impedance tube measurements of absorption of an anechoic termination and various fabrics in front of the anechoic termination.



NRC of anechoic termination

1.00

NRC of fabric in front of anechoic termination

.95

Miscellaneous

Colors may vary slightly between dye lots.

This is a directional fabric.

Application testing of this product is recommended.



Guilford of Maine®

Visit guilfordofmaine.com for complete specs and samples.



This pattern is included in the underwriters laboratory panel fabric recognition program. Additional testing of this U.L. recognized component fabric is not required on approved panels from participating manufacturers.

*ACT® registered certification marks.



American Micro Industries, Inc.
Attn: SoundproofCow.com
440 Ramsey Avenue
Chambersburg, PA 17201

sales@soundproofcow.com

Toll Free: 1-866-949-9COW
(1-866-949-9269)

Local: 717-262-7206

Fax: 717-261-1790