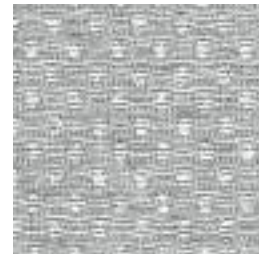


Streetwise 2721

Streetwise 2721



Stop Sign
1891



News Stand
1884



Crosswalk
1901



Taxi
1881



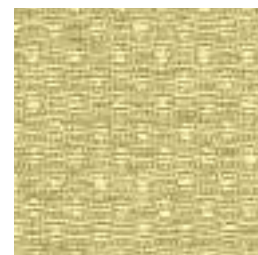
Light Rail
1885



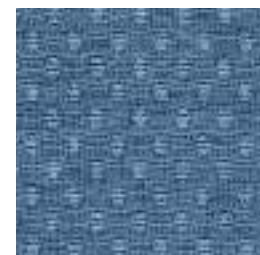
Parking Meter
1886



Doughnut Shop
1882



Hydrant
1883



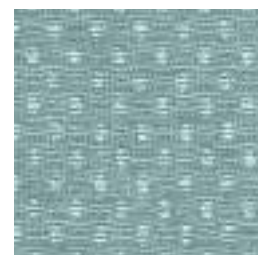
Mailbox
1890



Pavement
1894



Pigeon
1893



Commuter
1887



Pedestrian
1892



Asphalt
718

Specifications

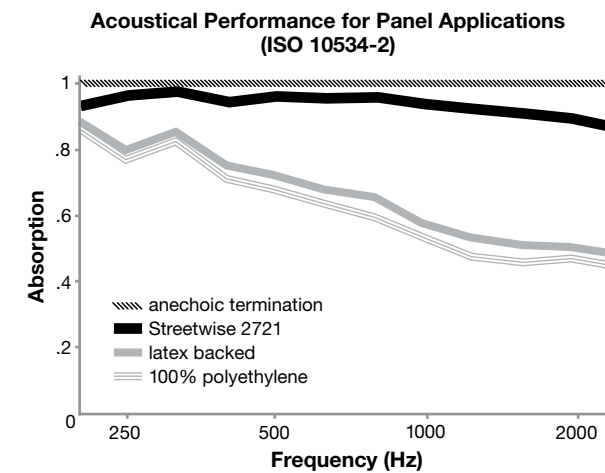
Content	22% post-consumer recycled polyester 78% pre-consumer recycled polyester
Weight	13.0 ± 1.0 oz./lin. yd.
Width	66" min. useable
Repeat	none

Cleaning Code

Standard Care Label W-S. Clean with water based cleaning agents, foam or pure, water free solvents. Vacuuming or light brushing is recommended to prevent dust and soil buildup.

Acoustical Performance

The plot below summarizes impedance tube measurements of absorption of an anechoic termination and various fabrics in front of the anechoic termination.



NRC of anechoic termination	1.00
NRC of fabric in front of anechoic termination	.95

Performance

- Colorfastness to Light (AATCC 16.3 Option 3)
Grade 4 min. at 40 hours

- Colorfastness to Crocking (AATCC 8)
Grade 4 min. dry & Grade 3 min. wet

- Breaking Strength (ASTM D5034)
220 lbf min. warp and 180 lbf min. fill

- Flammability (ASTM E84)
Class I or A

Sustainability

- 100% recycled and recyclable**
Terratex is a registered trademark of Duvaltex

Miscellaneous

Proudly woven in North America supporting our local communities.
Application testing of this product is recommended. Colors may vary between dye lots. This is a directional fabric.

Visit guilfordofmaine.com for samples.

This pattern is included in the underwriters laboratory panel fabric recognition program. Additional testing of this U.L. recognized component fabric is not required on approved panels from participating manufacturers.
*Certification Marks owned by the Association for Contract Textiles, Inc.