

Twigs 4231

PANEL

PANEL

Twigs 4231



Sycamore
9101



Hawthorn
9106



Magnolia
9109



Lychee
9105



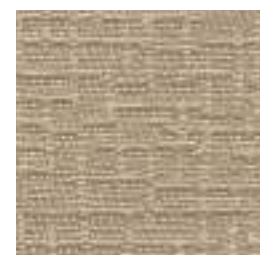
Bayberry
9112



Ash
9100



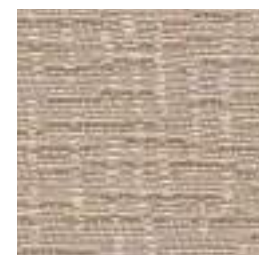
Sassafras
9104



Juniper
9103



Poplar
9110



Dogwood
9102



Linden
9107



Hickory
9111



Buckeye
9108

Specifications

Content	44% post-consumer recycled polyester 56% pre-consumer recycled polyester
Weight	11.3 ± 1.0 oz./lin. yd.
Width	66" min. useable
Repeat	19.5" vertical 14.4" horizontal

Cleaning Code

Standard Care Label W-S. Clean with water based cleaning agents, foam or pure, water free solvents. Vacuuming or light brushing is recommended to prevent dust and soil buildup.

Miscellaneous

Proudly woven in North America supporting our local communities.

Application testing of this product is recommended. Colors may vary between dye lots. This is a directional fabric.

Visit guilfordofmaine.com for samples.



This pattern is included in the underwriters laboratory panel fabric recognition program. Additional testing of this U.L. recognized component fabric is not required on approved panels from participating manufacturers.

*Certification Marks owned by the Association for Contract Textiles, Inc.

Performance

Colorfastness to Light (AATCC 16.3 Option 3)
Grade 4 min. at 40 hours

Colorfastness to Crocking (AATCC 8)
Grade 4 min. dry & Grade 3 min. wet

Breaking Strength (ASTM D5034)
190 lbf warp and 155 lbf fill

Flammability (ASTM E84)
Class I or A

Sustainability

100% recycled and recyclable
Terratek is a registered trademark of Duvaltex

