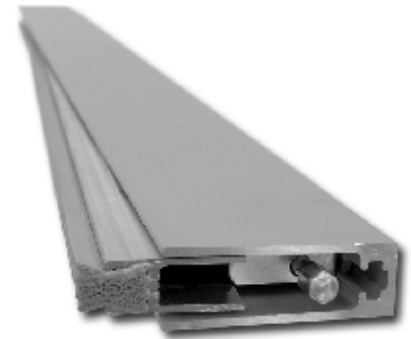


Quiet Door™ Automatic Door Sweep

Features & Benefits:

- **Acoustically tested** - Quiet Door™ Automatic Door Sweeps are tested for acoustic performance by independent laboratories.
- **Longevity** - As the seal materials age, the spring action pushes the seal snugly to the threshold to reestablish a like new fit.
- **Quality** - Quiet Door™ Automatic Door Sweeps are manufactured with high quality aluminum framing and have durable, long lasting Silicone seals.
- **Energy Saving**- Quiet Door™ Automatic Door Sweeps not only improve the soundproofing performance of common doors, but they also improve the thermal capabilities by reducing airflow transfer.



General Information:

Quiet Door™ Automatic Door Sweeps reduce noise transfer through doors by forming a tight fit against the threshold of a door. This product can be installed on new doors, with cheap vinyl sweeps, or to existing doors with old, worn-out sweeps. Quiet Door™ Automatic Door Sweeps can be installed on wood and metal doors. Quiet Door™ Automatic Sweeps are made of the heavy duty aluminum, long lasting silicone seals and include all stainless steel hardware. The soundproofing capability of this product lasts due to the seal quality and the automatic nature of the product. Silicone is durable, long lasting seal material and has superior acoustic performance. Silicone seals remain flexible in a variety of temperatures and resists tears better than the less durable, widely available vinyl and foam seals. Quiet Door™ Automatic Door Sweeps are automatic, meaning, that as the door closes, the seal is pushed snugly to the threshold. As the seal materials age, the spring action pushes the seal snugly to the threshold to reestablish a like new fit. Our Quiet Door™ Automatic Door Sweeps will decrease air flow, increasing the thermal performance of any door. These products were built to last and proudly made in the U.S.A.

How Quiet Door Seals and Sweeps are Acoustically Tested:

Soundproofing seals and sweeps are tested with operational doors. Operational meaning they open and close like a door should. Then, a separate test is completed on a “static door”, a door that is non operational. The static door will have a higher Sound Transmission Class (STC) number due to the lack of air gaps. When a door is hung the soundproofing performance plummets because of the additional air spaces. Compare the static door rating to the operational door rating. The smaller the difference in STC rating, the better the perimeter seals and sweeps will reduce noise transfer.

All of our Quiet Door™ Soundproofing products were tested as assemblies and not single products. Our tests included perimeter seals, doors sweeps and thresholds. For help in choosing an assembly or single product for your situation, please give our friendly consultants a call.

Applications:

Hotel and Resort Doors • Apartment and Condo Doors • Home Theater Doors • Recording Studio Doors • Warehousing and Industrial Manufacturing Doors Facilities Doors • Dog Kennel Doors • Office and Conference Room Doors • Band Practice Rooms • Broadcast Studios • Computer and Equipment Rooms

continued on back of page

ADDRESS

Soundproofcow
440 Ramsey Avenue
Chambersburg, PA 17201

PHONE

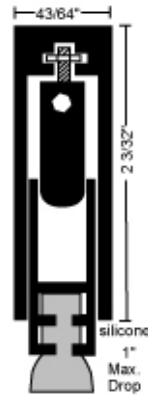
P: 1-866-9499-COW
F: (717) 261-1790

WEB

www.soundproofcow.com



Product Dimensions:



Product Availability and Coverage:

Package Contents:

- 1 - 36 in. long piece for along the bottom of the door. (Aluminum color)

Coverage:

- One package treats a 32 to 36 in. wide door.

Special Order Sizes:

- 48 in. long
- 60 in. long

Certifications:

- **UL10B & CAN4-S104-80M CLASSIFIED** - complies with NFPA 80 and NFPA 252 for application to Steel fire doors rated up to 3 hrs., and Wood type fire doors rated up to 1 ½ hrs. (Rating on some items may vary and are noted.)
- **POSITIVE PRESSURE UL10C CLASSIFIED** - Category 'J' listed. Complies with IBC, UBC7-2 (1997) NFPA 80 and NFPA 252 for application to Positive Pressure Steel fire doors rated up to 3 hrs., and Wood type fire doors rated up to 1 ½ hrs. (Rating on some items may vary and are noted.)
- **SMOKE & DRAFT CONTROL GASKETING** - Category 'H' listed. Complies with IBC, UBC7-2 (1997) Part 2, UL1784, NFPA 105 for use on 'S' labeled Positive Pressure Steel fire doors rated up to 3 hrs., and Wood type fire doors rated up to 1 ½ hrs.
- **ACOUSTICAL TESTED** - to ASTM E90 and ASTM E413, by Riverbank Acoustical Laboratories in Geneva, IL.
- **AIR INFILTRATION TESTED** - to ASTM E283, Standard Test Method for Determining Rate of Air Leakage Through Exterior Windows, Curtain Walls, and Doors.
- **ANSI/BHMA CERTIFIED** - Certified gasketing complies with A156.22-2005, and is listed in the BHMA Certified Products Directory.

Warnings and Limitations:

- The Quiet Door™ line of perimeter seals and sweeps can be used on almost any door to reduce sound transfer and they can be used on almost any door type. Some older doors may not have enough mounting area. Please double check all measurements and dimensions.
- Do not pull drop bar out of case unless disengaged from spring or damage will occur and void warranty.
- The Quiet Door™ line of perimeter seals and sweeps may need to be trimmed to fit. When trimming our Adjustable or Automatic products, care should be taken to not cut internal mechanisms that could impact the functionality of the product.

ADDRESS

Soundproofcow
440 Ramsey Avenue
Chambersburg, PA 17201

PHONE

P: 1-866-9499-COW
F: (717) 261-1790

WEB

www.soundproofcow.com

