

Panel | Acoustic

Chase 2138



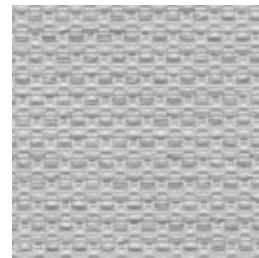
Buff
1242



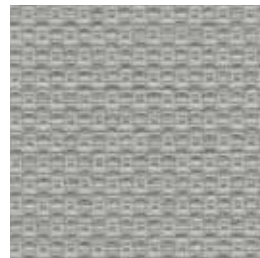
Coin
1243



Ecrú
1241



Shadow
1246



Mist Green
1244



Ochre
1251



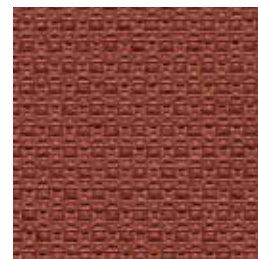
Chambray
1249



Pewter
1247



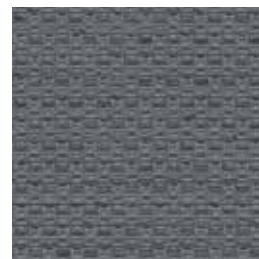
Mushroom
1245



Red Clay
1252



Moss
1250



Pumice
1248

duvaltex

Chase 2138

Panel | Acoustic

Specifications

Content	74% polyester 26% post-consumer recycled polyester
Weight	13.3 ± 1.0 oz./lin. yd
Width	66" min. useable
Repeat	none
Treatment	polyester binder

Cleaning Code

Standard Care Label W-S. Clean with water based cleaning agents, foam or pure, water free solvents. Vacuuming or light brushing is recommended to prevent dust and soil buildup. May also be disinfected with hydrogen peroxide, alcohol, and quaternary ammonium (quat) based cleaners.

Miscellaneous

- Application testing of this product is recommended.
- Colors may vary between dye lots.
- This is a directional fabric.

Proudly woven in North America supporting our local communities.

duvaltex

Performance

- Colorfastness to light (AATCC 16.3 Option 3)**
Grade 4 min. at 40 hours
- Colorfastness to crocking (AATCC 8)**
Grade 4 min. dry & Grade 3 min. wet
- Breaking Strength (ASTM D5034)**
280 lbf min. warp and 200 lbf min. fill
- Flammability**
ASTM E84 Class I or A

Acoustical Performance

Our acoustic fabrics are all acoustically transparent. This represents the amount of sound that passes through the fabric.

Acoustic Transparency: 95%

For more detailed results, please consult our website.

This pattern is included in the underwriters laboratory panel fabric recognition program. Additional testing of this U.L. recognized fabric is not required on approved panels from participating manufacturers.

*Certification Marks owned by the Association for Contract Textiles, Inc.

USA & INTERNATIONAL | T 800-544-0200
CANADA | T 418 227-9897
 For samples, visit guilfordofmaine.com